



Easy Chess Puzzle # 0111

By

G Bud Games
<https://gbud.in>

January 20, 2022

Contents

Easy Chess puzzle # 0111 - Capture opponent's queen in two moves.	3
Easy chess puzzle 0111	3
Solution to easy chess puzzle 0111	4
Solution 1	4
Right moves for the solution to the easy chess puzzle 0111	7
Explanation for the moves	7
Categories of easy chess puzzle 0111	7
easy chess puzzle 0111 chart	8
How to view the solution to easy chess puzzle 0111	10
How to get help for moves in the easy chess puzzle 0111	11
Play chess for free	12

List of Figures

1	Solve this easy chess puzzle 0111. Capture opponent's queen in two moves. @ https://gbud.in/gz78jv1	3	
2	Solve this chess puzzle online with solution @ https://gbud.in/gz78jv1		3
3	Initial board position of easy chess puzzle 0111	4	
4	Qxa6	5	
5	b8=N+	5	
6	Kc7	6	
7	Nxa6+	6	
8	easy chess puzzle 111 chart 1	8	
9	easy chess puzzle 111 chart 2	9	
10	easy chess puzzle 111 chart 3	9	
11	easy chess puzzle 111 chart 4	10	
12	Click the solution button to view solutions @ https://gbud.in/gz78jv1	10	
13	Click the help button to get help on next move @ https://gbud.in/gz78jv1	11	
14	Solve more easy puzzles @ https://gbud.in/chsezpz	11	
15	Solve other puzzles @ https://gbud.in/chsgppz	11	
16	Play chess online for free. Solve puzzles and play with friends	12	
17	Solve this puzzle online by scanning this QR code or go to the link below	13	

Easy Chess puzzle # 0111 - Capture opponent's queen in two moves.

Solve this easy chess puzzle and improve your chess games through improvement of your chess strategies and chess tactics.

Puzzle No : 0111

Difficulty level : Easy

Description : Capture opponent's queen in two moves.

Next Move : White

Player level : Beginner

Short URL for puzzle : <https://gbud.in/gz78jv1>

Easy chess puzzle 0111

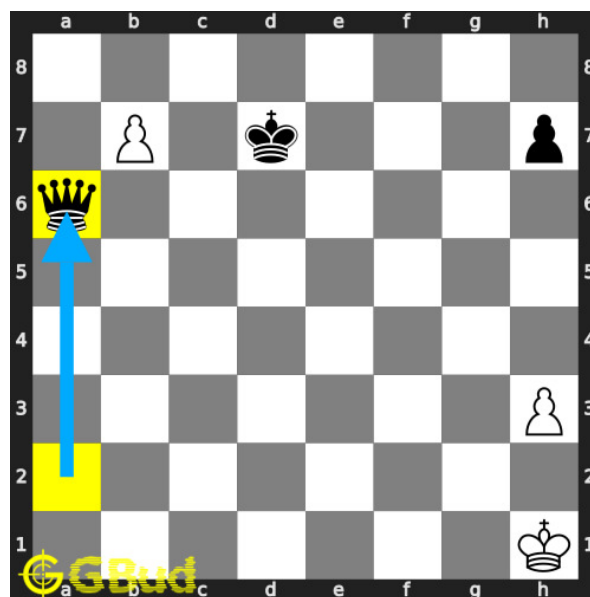


Figure 1: Solve this easy chess puzzle 0111. Capture opponent's queen in two moves. @ <https://gbud.in/gz78jv1>



Figure 2: Solve this chess puzzle online with solution @ <https://gbud.in/gz78jv1>

Dont forget to check out [chess puzzles](#), [easy chess puzzles](#), [medium chess puzzles](#), [hard chess puzzles](#) and [chess puzzles collections](#) .

Solution to easy chess puzzle 0111

At this puzzle, next [move](#) is by [White](#). The objective of the puzzle is to capture opponent's queen in two moves..

See the interactive solution at the [puzzle page](#)

Solution 1

Initial board position This is the initial board position of easy chess puzzle 0111.

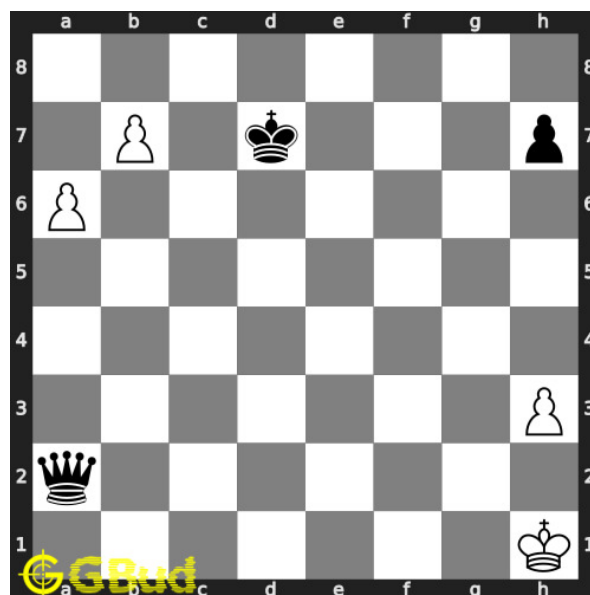


Figure 3: Initial board position of easy chess puzzle 0111

Move 1 Move by black

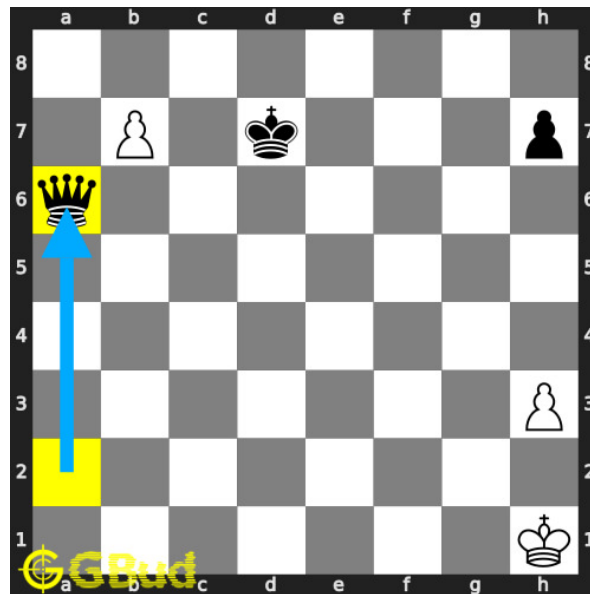


Figure 4: Qxa6

opponent want to stop the **promotion** of your **pawn** by capturing it.

Move 2 Move by white

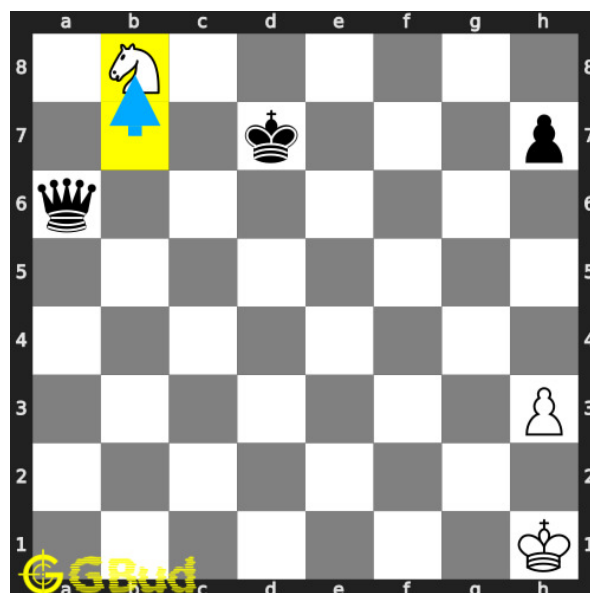


Figure 5: b8=N+

the **pawn** is under promoted to a **knight** and **forks** the opponent's **king** and **queen**.

Move 3 Move by black

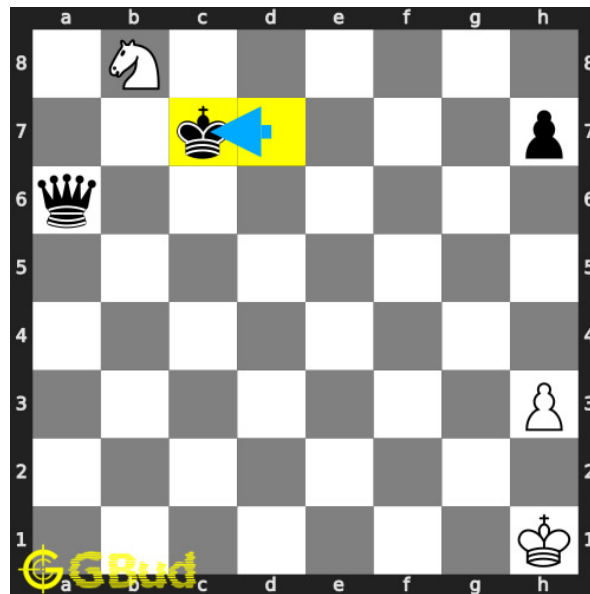


Figure 6: Kc7

opponent's **king** escapes from the **check** threat by moving to **c7**.

Move 4 Move by white

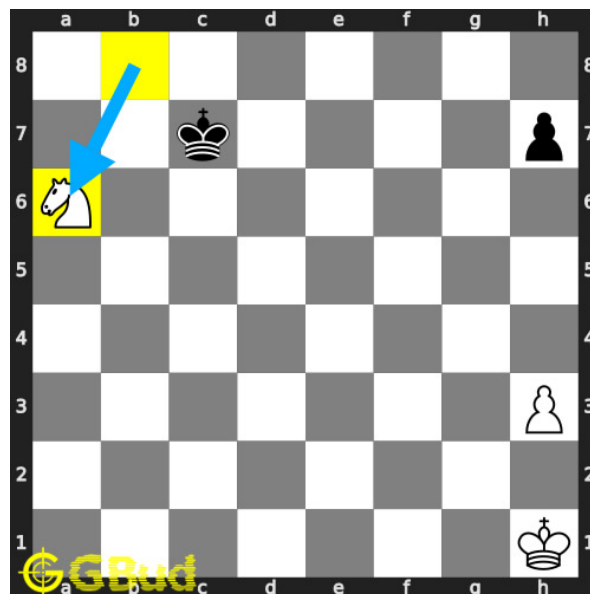


Figure 7: Nxa6+

your **knight** captures opponents hanging **queen**. this is how you can **capture** opponent's **queen** in two **moves**. .

Right moves for the solution to the easy chess puzzle 0111

Based on the objective of the puzzle, you have to make the right moves. Following are the right moves

1. b8=N+, Nxa6+

Explanation for the moves

1. Qxa6 - Opponent want to stop the promotion of your pawn by capturing it.
2. b8=N+ - The pawn is under promoted to a knight and forks the opponent's king and queen.
3. Kc7 - Opponent's king escapes from the check threat by moving to c7.
4. Nxa6+ - Your knight captures opponents hanging queen. This is how you can capture opponent's queen in two moves. .
5. For right move - You have chosen the right promotion to capture the queen. Keep solving the puzzles
6. For wrong move - You could have under promoted the pawn to capture the queen. You can do better. Try Try

Categories of easy chess puzzle 0111

This easy chess puzzle falls in these categories.

1. [Easy chess puzzles](#)
2. [Gain puzzles in chess](#)
3. [Fork puzzles in chess](#)
4. [Promotion puzzles in chess](#)
5. [Strategy puzzles in chess](#)
6. [Pawn puzzles in chess](#)
7. [Knight puzzles in chess](#)

easy chess puzzle 0111 chart



Figure 8: easy chess puzzle 111 chart 1



Figure 9: easy chess puzzle 111 chart 2



Figure 10: easy chess puzzle 111 chart 3

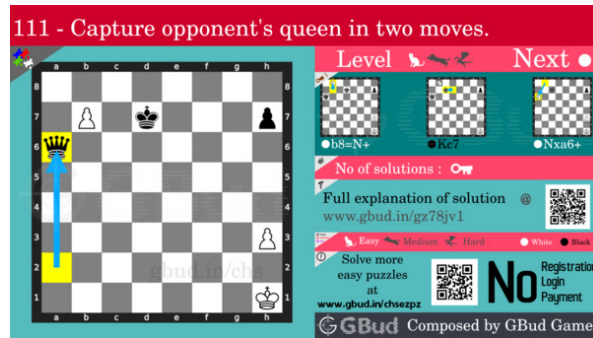


Figure 11: easy chess puzzle 111 chart 4

How to view the solution to easy chess puzzle 0111

To view the [solution to this puzzle](https://gbud.in/gz78jv1), follow the steps given below

1. Go to the [puzzle page](https://gbud.in/gz78jv1)
2. Click the solution button (Key as shown [below](https://gbud.in/gz78jv1)) to view the solution

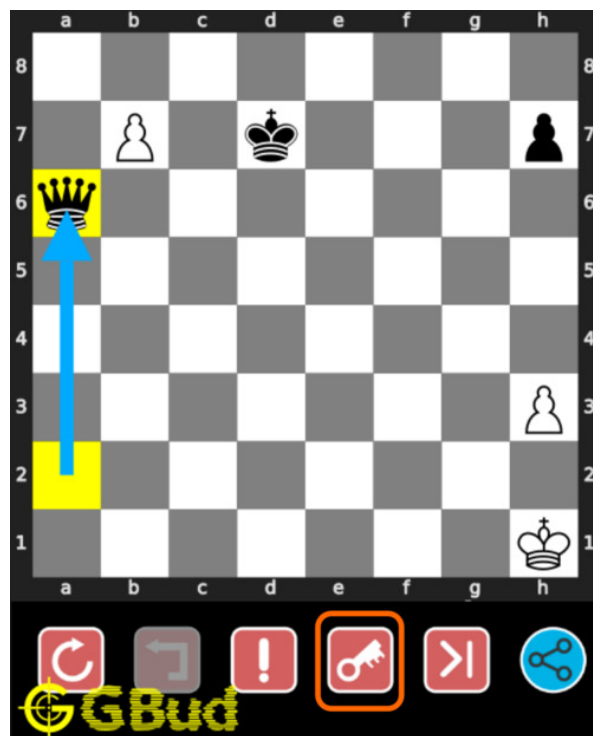


Figure 12: Click the solution button to view solutions @ <https://gbud.in/gz78jv1>

How to get help for moves in the easy chess puzzle 0111

To get help or the possible next moves in the puzzle, , follow the steps given below

1. Go to the [puzzle page](#)
2. Click the help button (exclamation mark as shown [below](#)) to get help or suggestion on next possible [move](#)

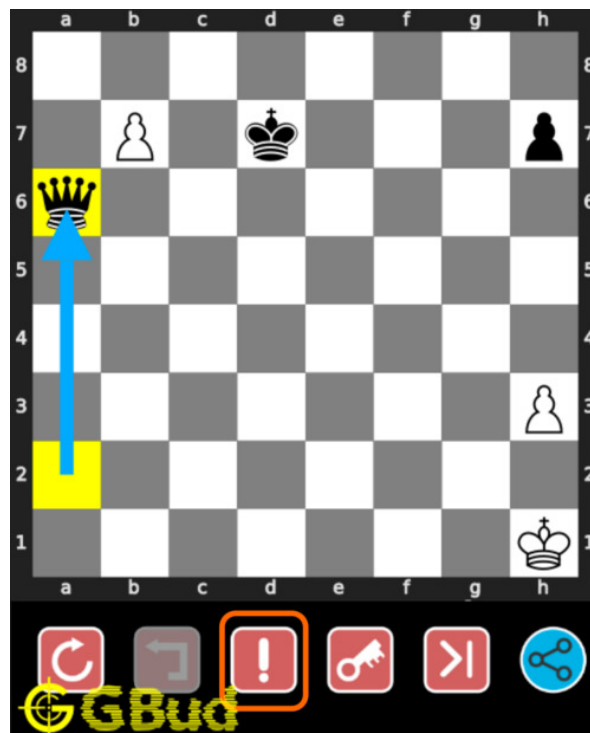


Figure 13: Click the help button to get help on next move @ <https://gbud.in/gz78jv1>



Figure 14: Solve more easy puzzles @ <https://gbud.in/chsezpz>



Figure 15: Solve other puzzles @ <https://gbud.in/chsgppz>

Play chess for free

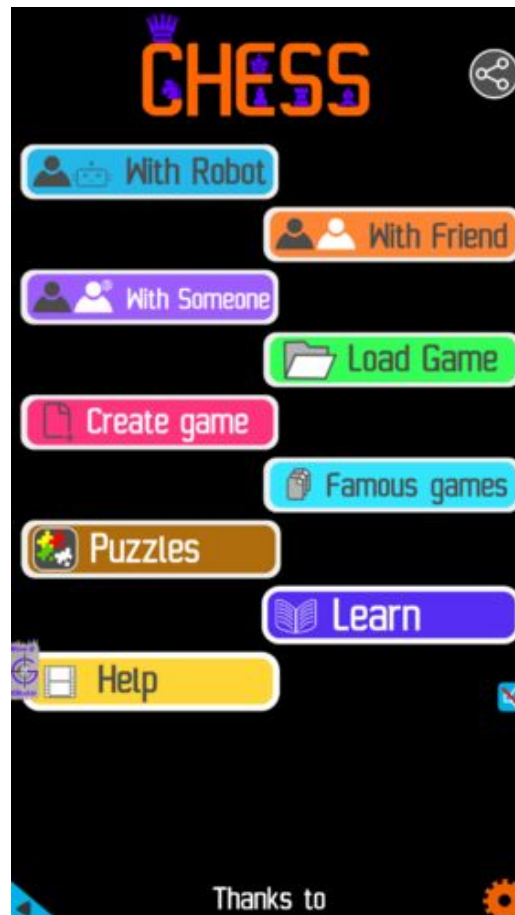


Figure 16: Play chess online for free. Solve puzzles and play with friends

Play chess for free at <https://gbud.in/chs>

We present you a platform to play chess online with friends for free. No need to install any app. You can play chess for free without registration or login.

Simple. You can do several chess related activities.

1. [solve chess puzzles](#)
2. [learn about chess](#)
3. [play chess with computer](#)
4. [play chess with friend](#)
5. [create your own chess games](#)

6. [fen viewer](#)
7. [fen editor](#)
8. [fen generator](#)
9. [pgn viewer](#)
10. [chess board editor](#)
11. [view famous chess games.](#)



Figure 17: Solve this puzzle online by scanning this QR code or go to the link below

<https://gbud.in/gz78jv1>

Read the latest article on Easy Chess puzzle # 0111 - Capture opponent's queen in two moves. by scanning this QR code or click the link

Previous article : « [Easy Chess puzzle # 0110 - Mate in 1 move](#)

Next article : [Easy chess puzzles](#) »

[Back to top](#)

[Contact Us](#)